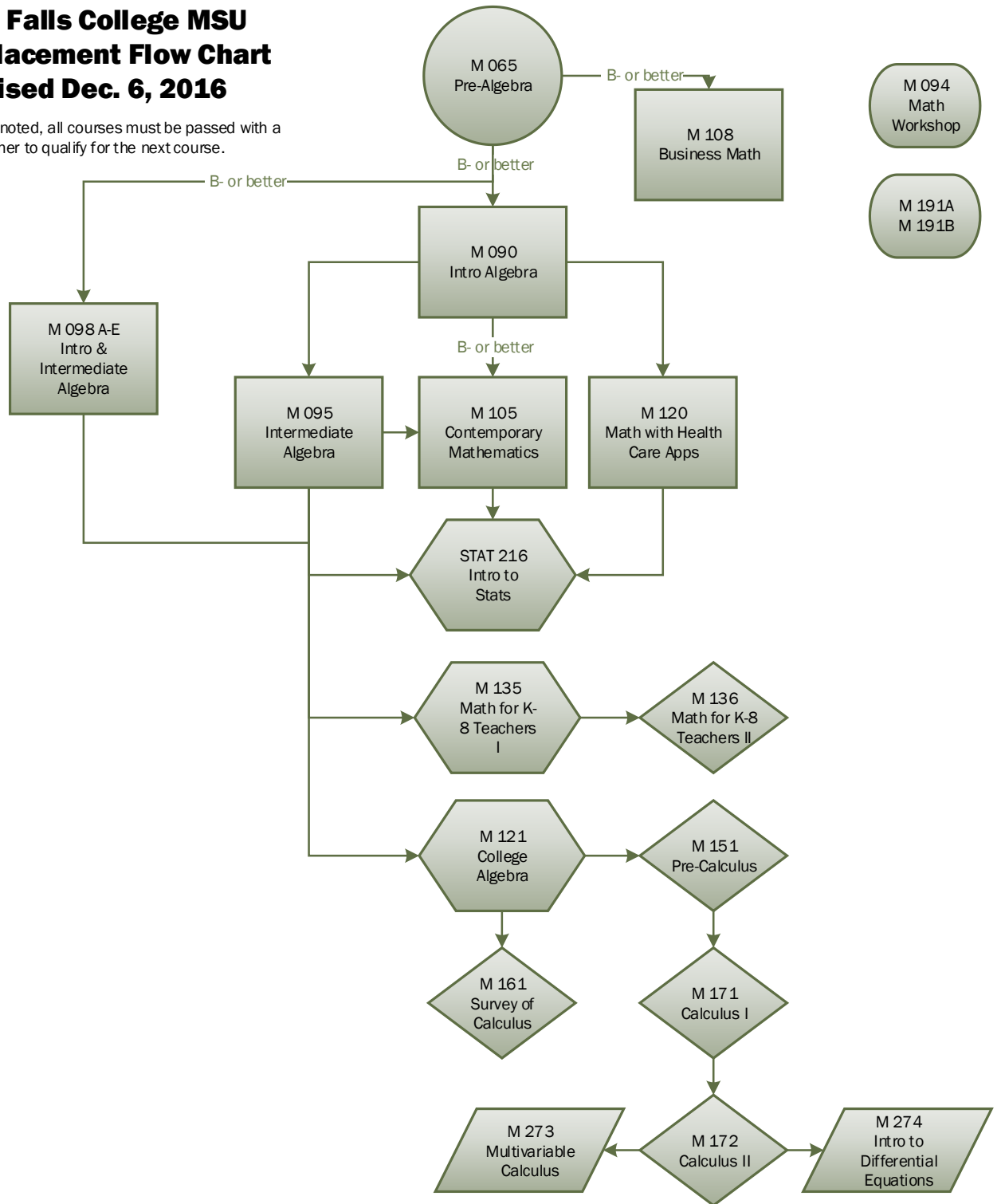


Great Falls College MSU Math Placement Flow Chart Revised Dec. 6, 2016

If not specifically noted, all courses must be passed with a grade of C- or higher to qualify for the next course.



	ACT	SAT	COMPASS (Pre-algebra)	COMPASS (Algebra)	COMPASS (College Algebra)	Accuplacer (Arithmetic)	Accuplacer (Elem. Alg.)	Accuplacer (College Math)
M 094	0-9	0-299	0-25			0-29		
M 065; M 191 A / B	10-20	300-489	26-46			30-70		
M 090; M 098 A - E; M 108	21	490-509	47-99	0-45		71 +	47-64	
M 095; M 105; M 120	22	510-529		46-51			65-97	
M 121; M 135; STAT 216	23-24	530-569		52-65			98 +	57-80
M 151; M 161	25-26	570-609		66-99	0-62			81-103
M171	27 +	610 +			63-99			104 +

Great Falls College MSU Writing Placement

	WRIT 094 Writing Skills Workshop	WRIT 095 Developmental Writing	WRIT 101 College Writing I & WRIT 122 Intro to Business Writing
ACT English	0-15	16-17	18 +
ACT ELA Score		0-17	18 +
SAT Reading & Writing	0-370	371-439	440 +
SAT Writing & Language	0-21	22-24	25 +
WritePlacer	1-3	4	5 +
Compass E-Write	0-4	5-6	7 +
Compass Writing	21-46	47-75	76 +

Great Falls College MSU Biology Placement

	ACT	SAT	COMPASS	MUS Writing	Accuplacer
BIOB 101 Discover Biology & Lab	Placement at WRIT 101 level Placement at M 090 or higher				
BIOH 104 Basic Human Biology & Lab					
BIOH 108 Basic Anatomy					
<i>Or completion of M 065 Pre Algebra & WRIT 095 Developmental Writing with a C- or higher</i>					
BIOH 201 Human Anatomy & Physiology I & Lab	Placement at WRIT 101 level Placement at M 095 or higher				
<i>Or completion of M 090 Intro Algebra & WRIT 095 Developmental Writing with a C- or higher</i>					

Students must meet the minimum test scores or class pre-requisites for **both** Writing and Math.

***BIOH 112** ~ Human Form and Function I **DOES NOT** have placement scores required
Please see the course catalog for other science course placement requirements.